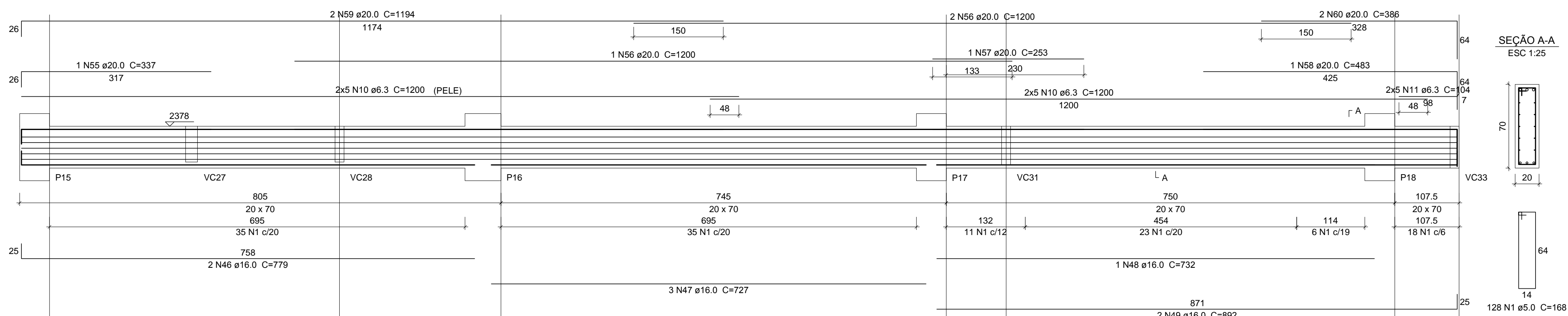
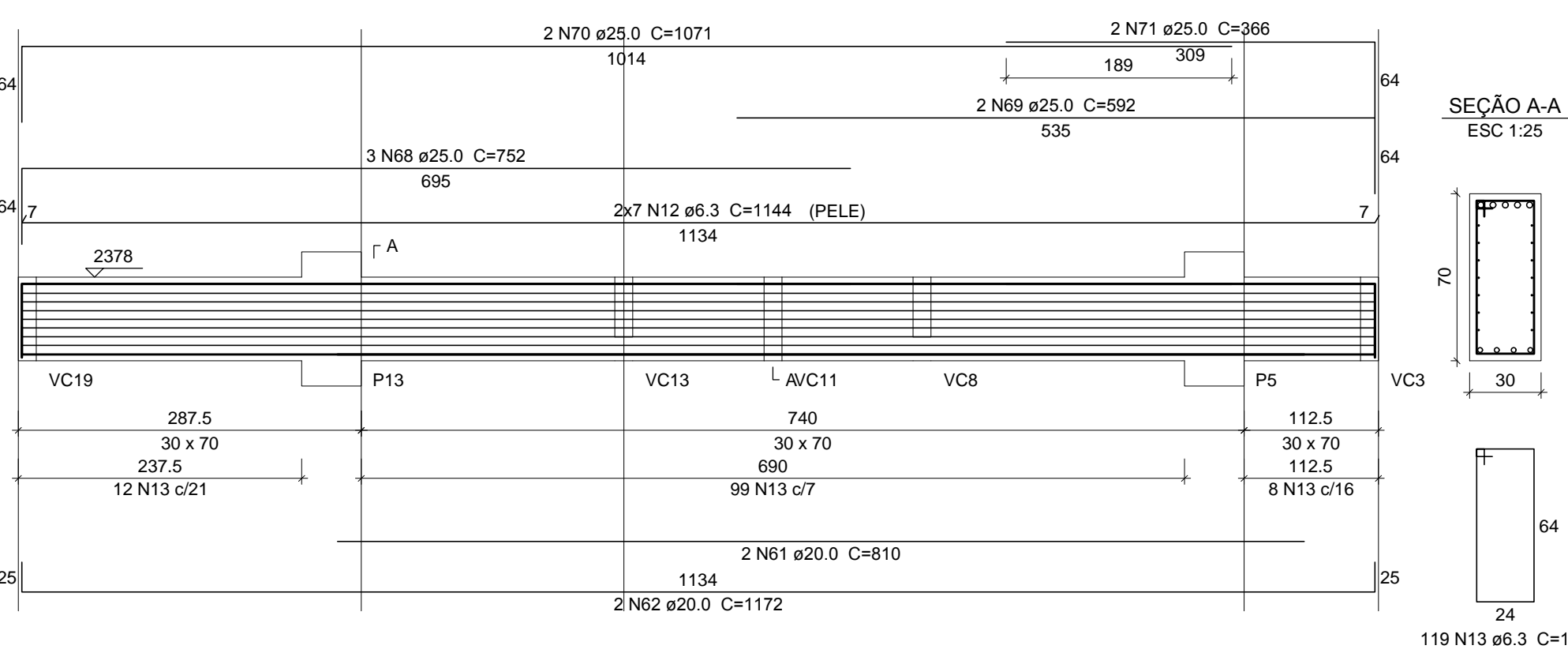


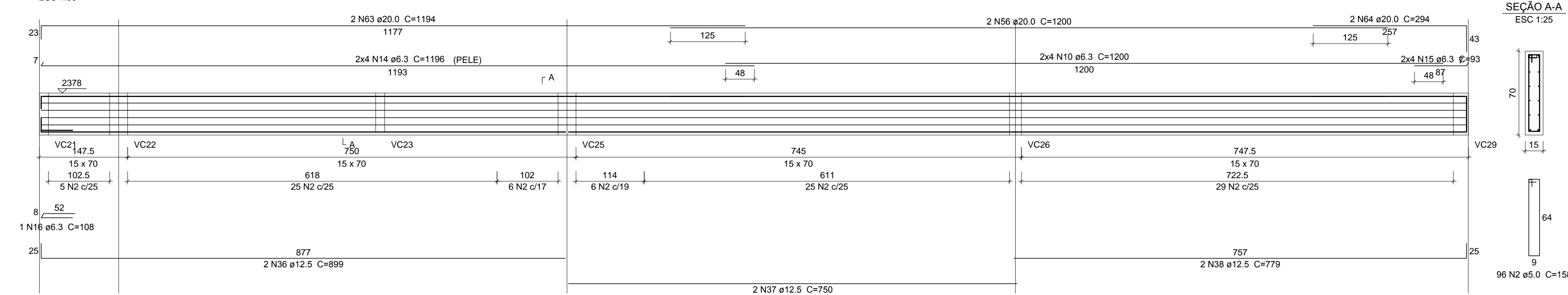
VC18 (20 x 70)  
ESC 1:50



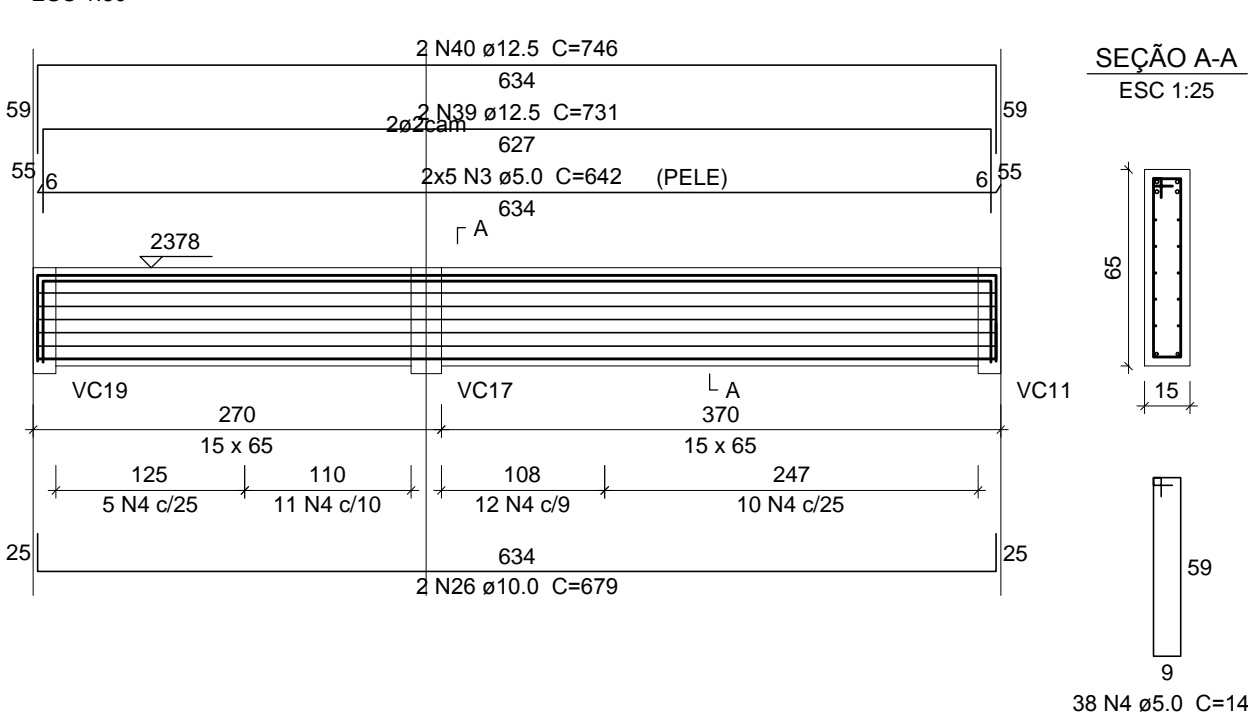
VC22 (30 x 70)  
ESC 1:50



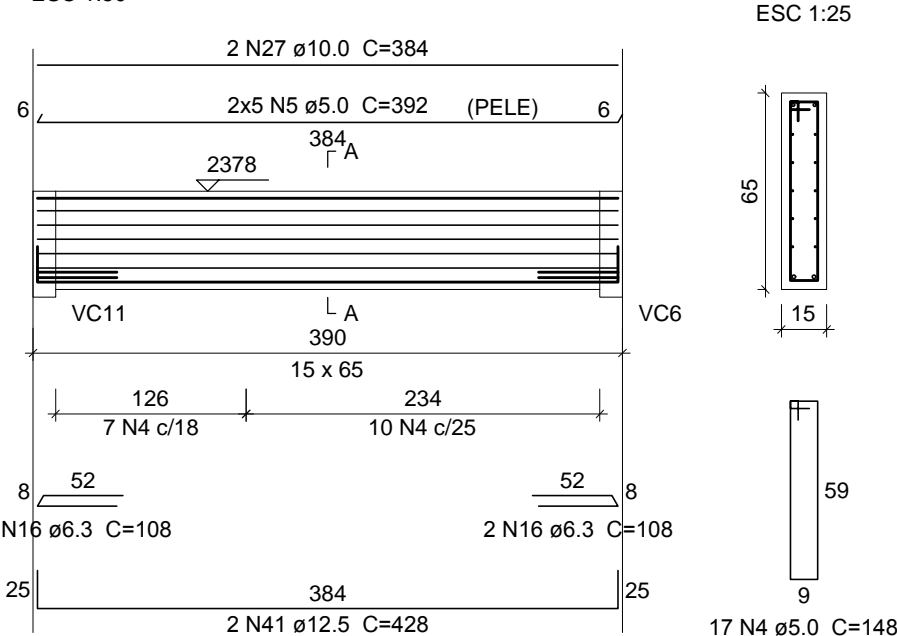
VC19 (15 x 70)  
ESC 1:50



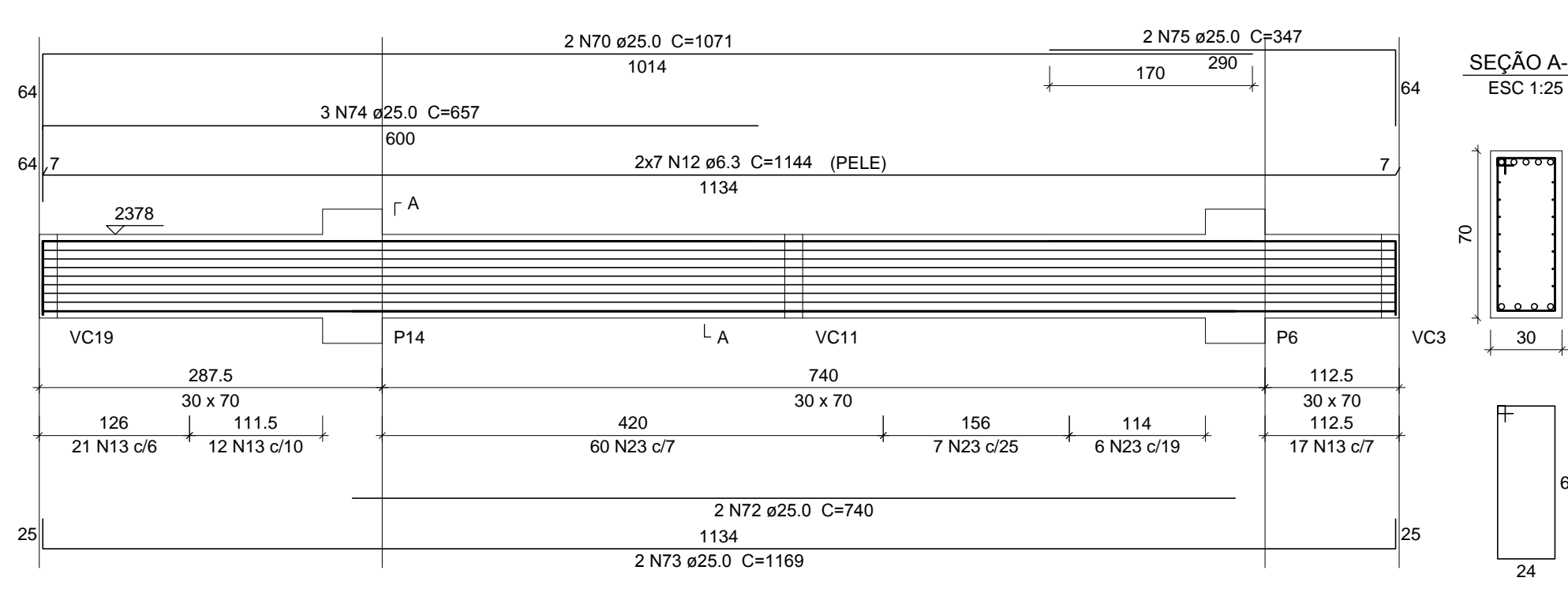
VC23 (15 x 65)  
ESC 1:50



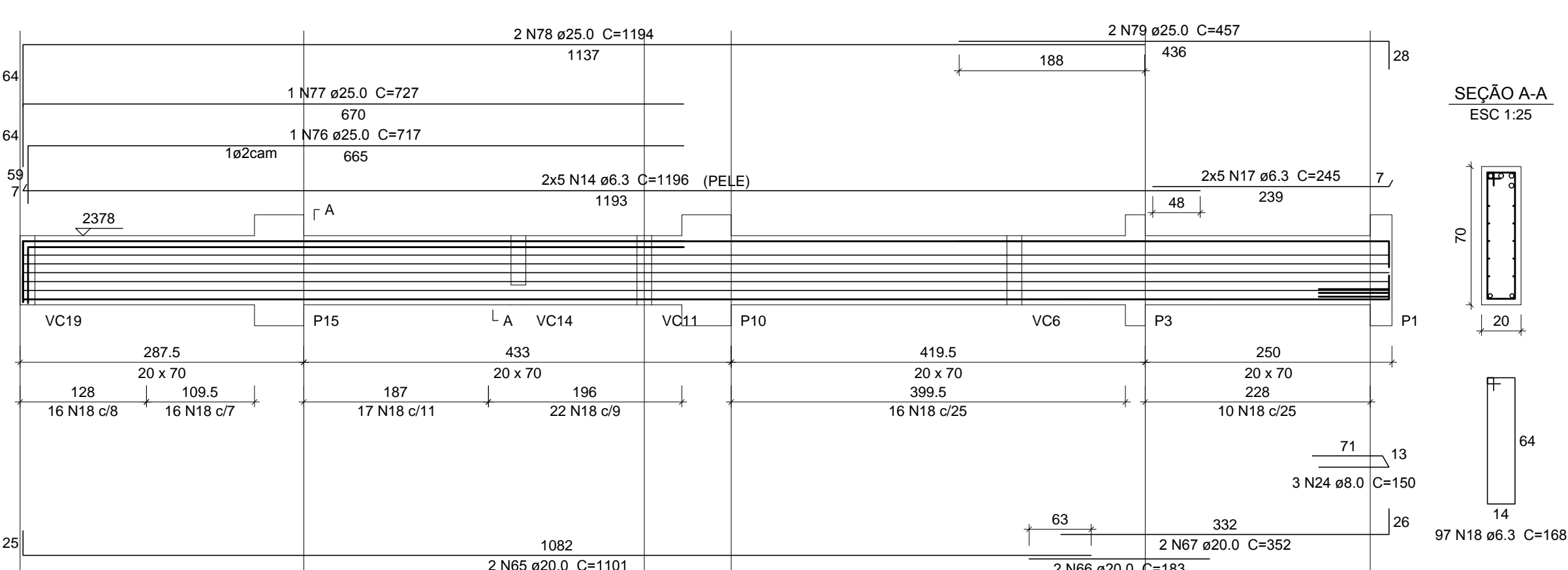
VC24 (15 x 65)  
ESC 1:50



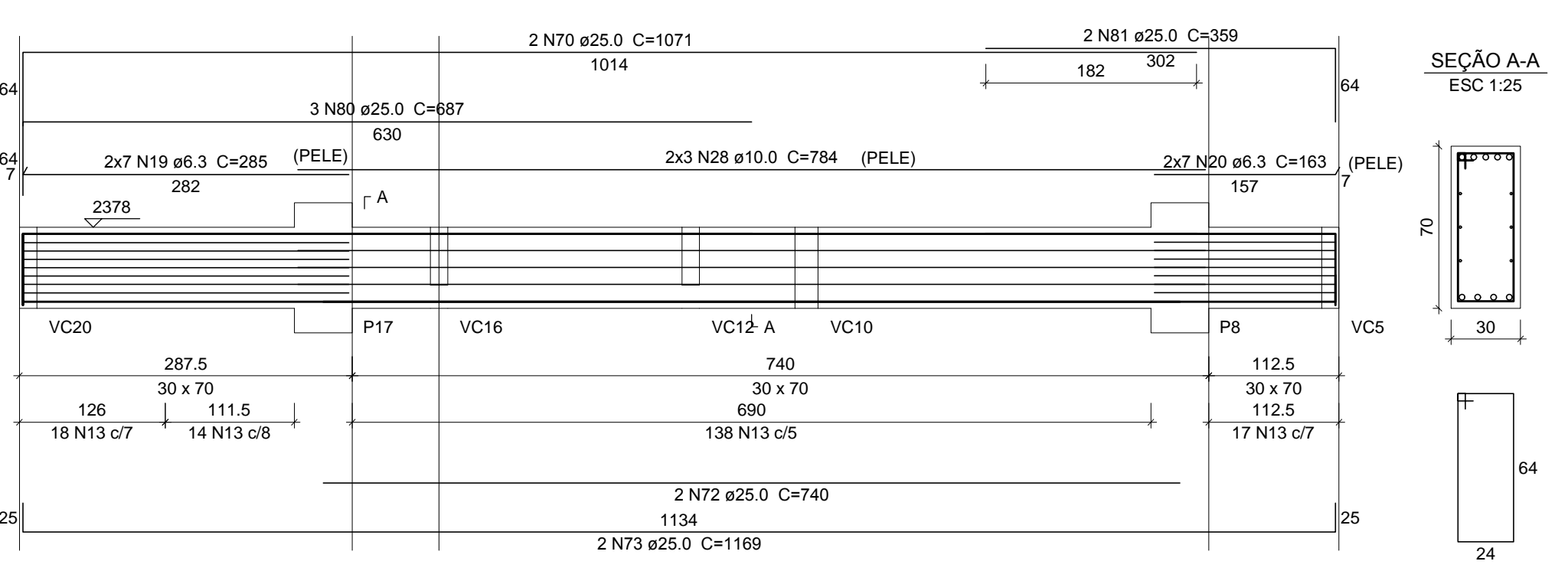
VC25 (30 x 70)  
ESC 1:50



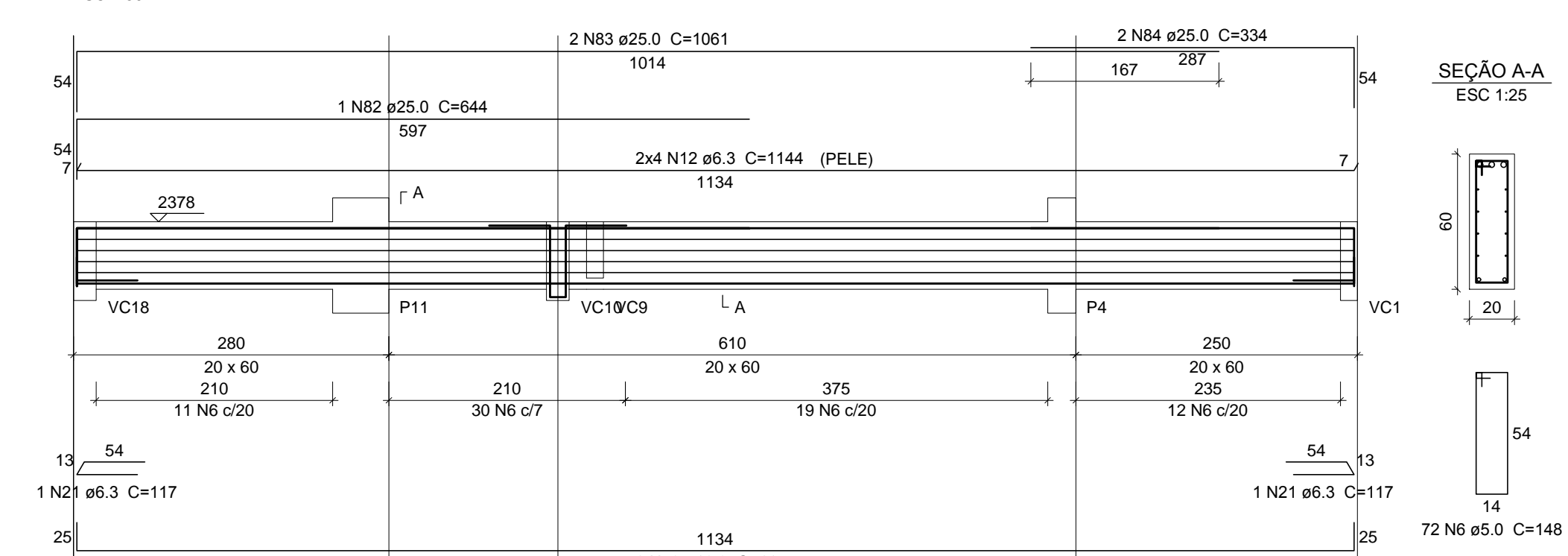
VC26 (20 x 70)  
ESC 1:50



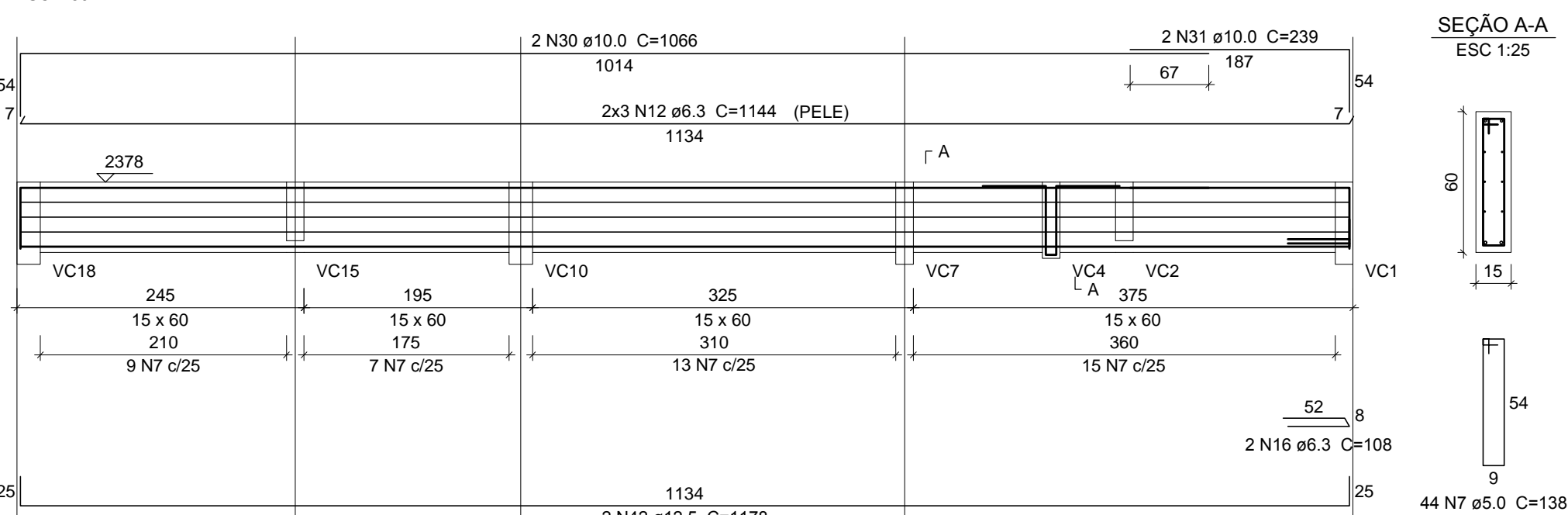
VC30 (30 x 70)  
ESC 1:50



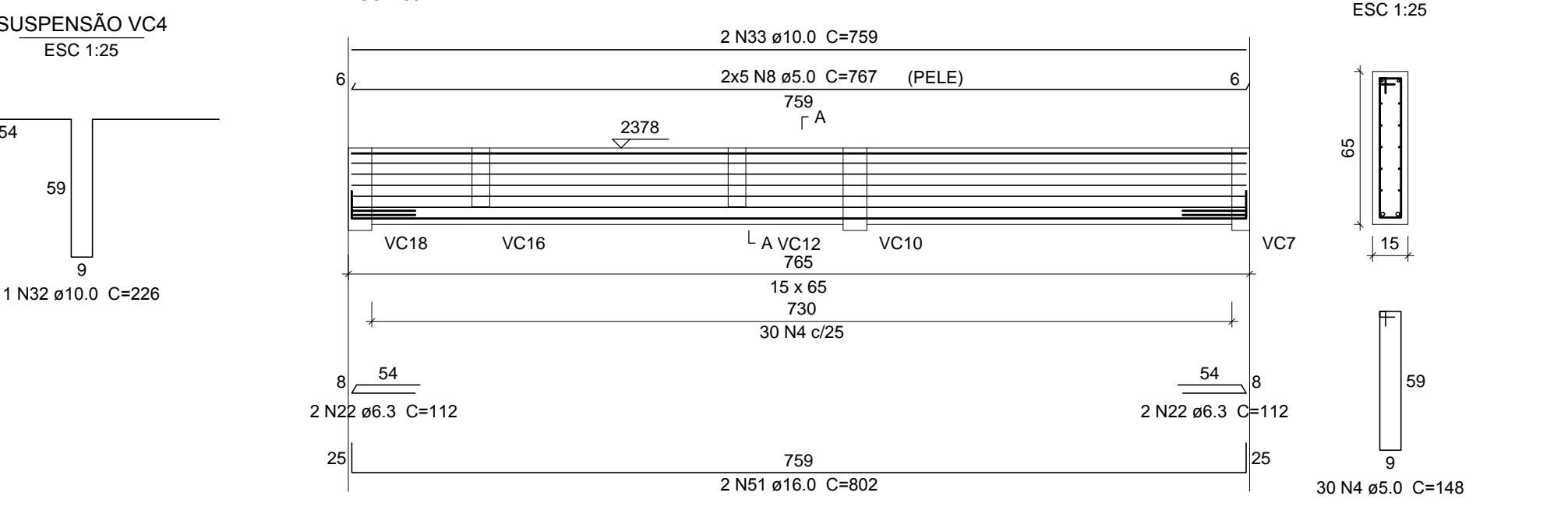
VC27 (20 x 60)  
ESC 1:50



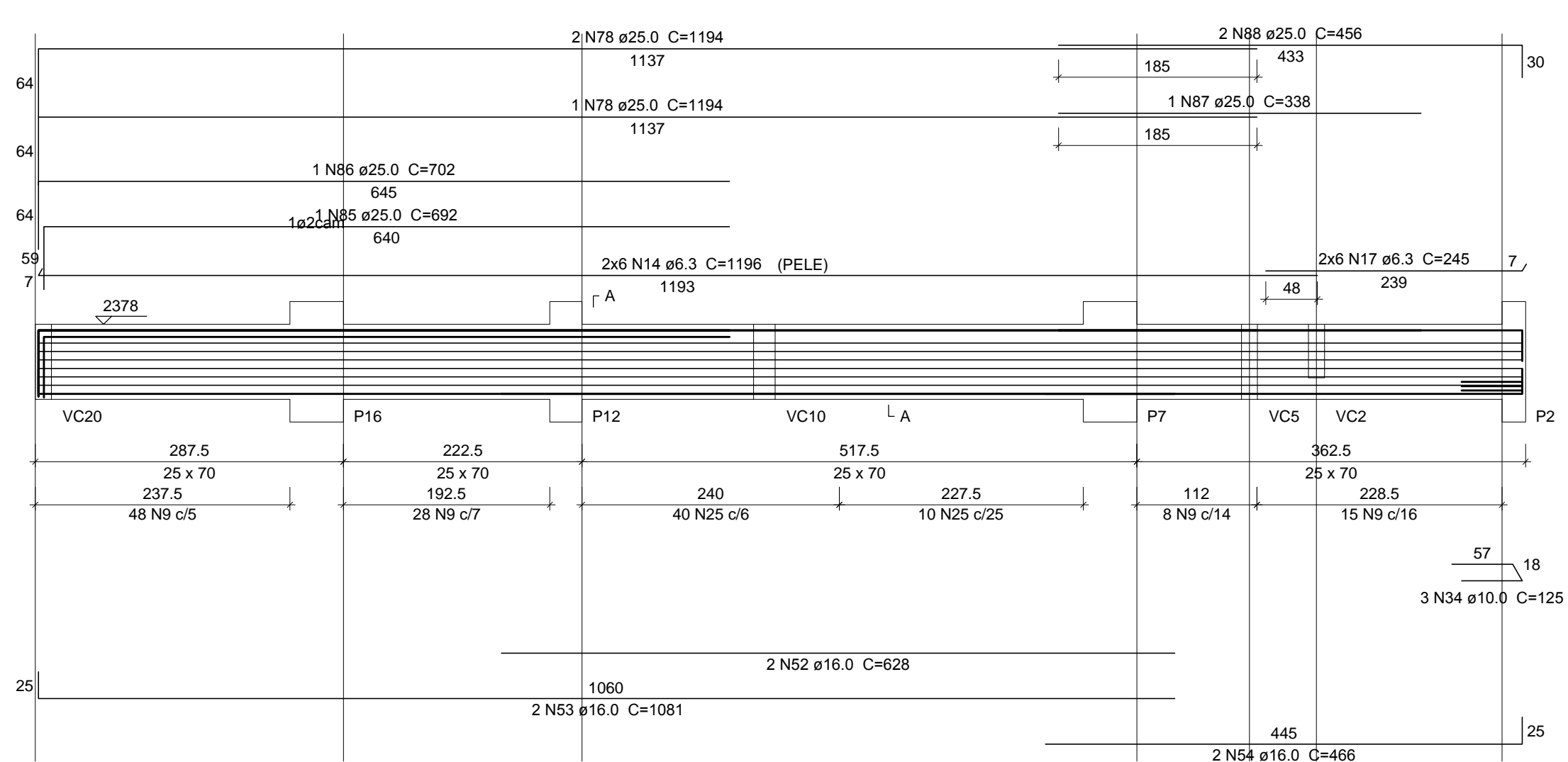
VC28 (15 x 60)  
ESC 1:50



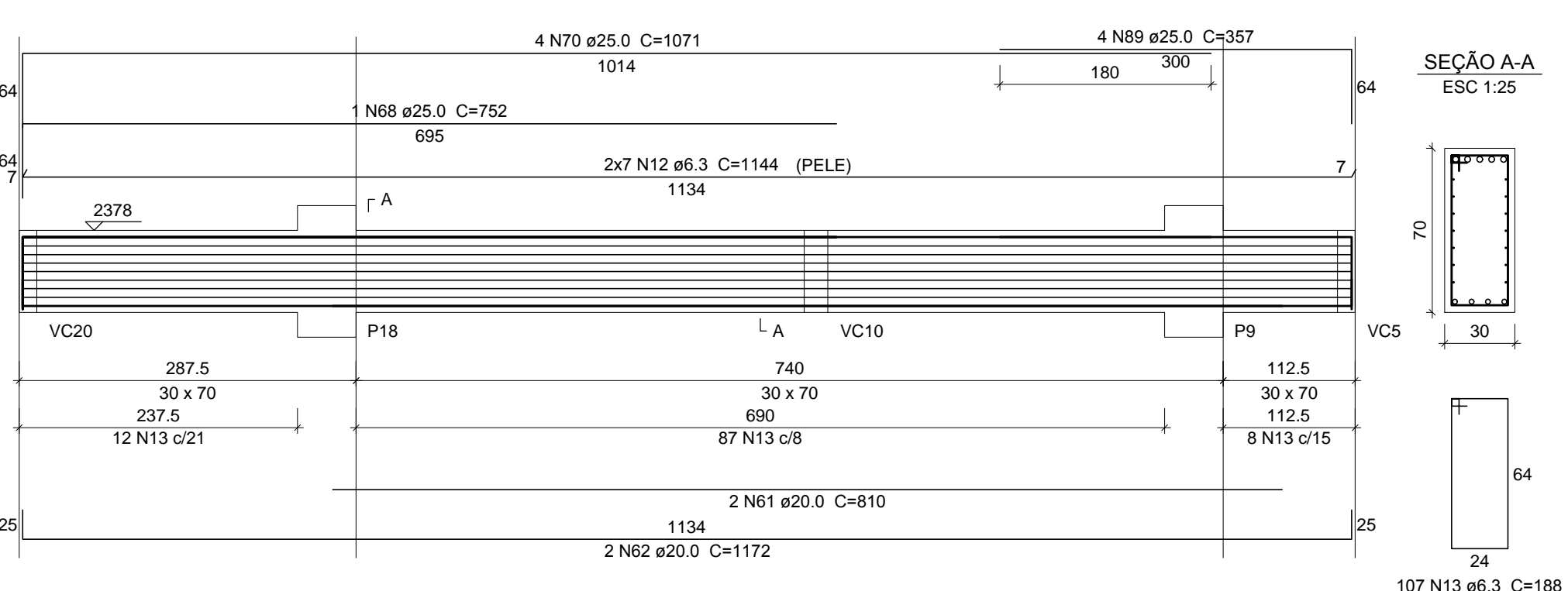
VC31 (15 x 65)  
ESC 1:50



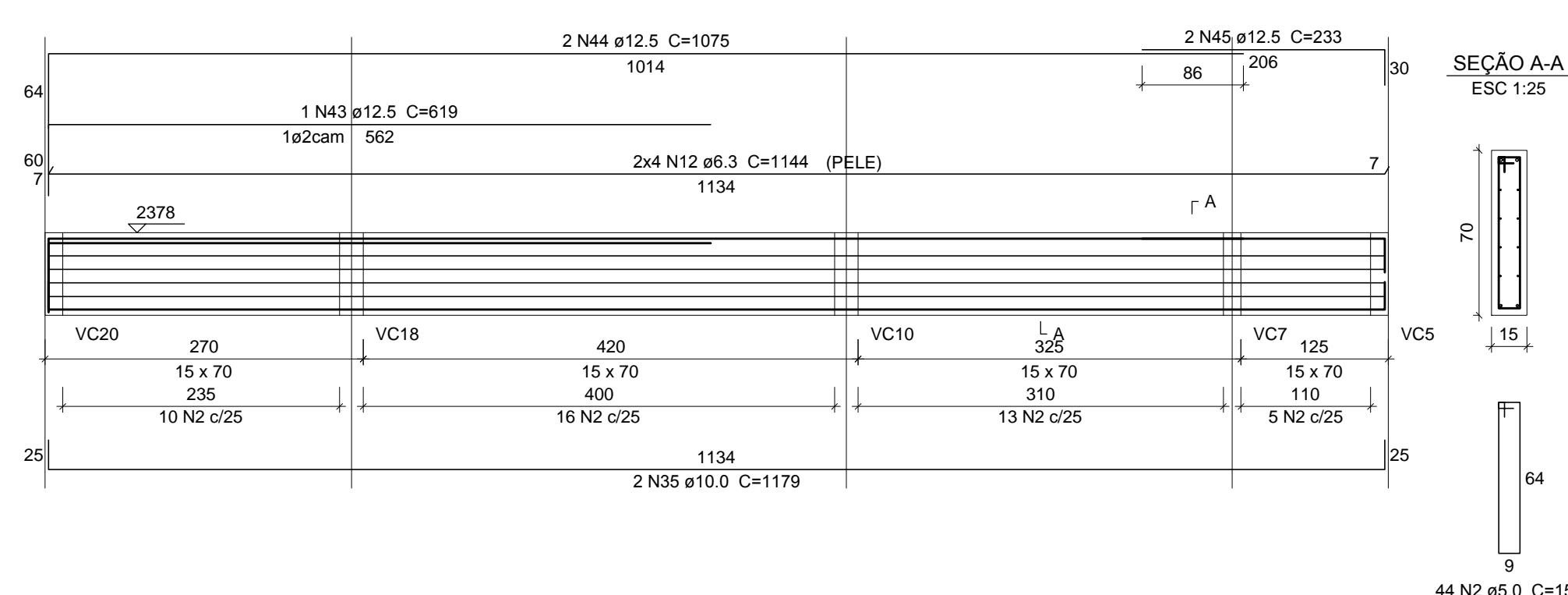
VC29 (25 x 70)  
ESC 1:50



VC32 (30 x 70)  
ESC 1:50



VC33 (15 x 70)  
ESC 1:50



## NOTAS GERAIS :

PARA TODAS AS PARTES DA OBRA :

1. CONCRETO Fck=25,0 MPa (250 kgf/cm²); FATOR AGUACIMENTO MÁXIMO = 0,8 kg; CONSUMO MÍNIMO DE CIMENTO = 300kg/m³.

2. EFETUAR CURA DO CONCRETO POR UM PERÍODO NÃO INFERIOR A 7 DIAS, MANTENDO UMEDECIDA A SUPERFÍCIE E/OU PROTEGENDO-A.

3. USAR DISTANCIADORES PARA GARANTIR OS COBRIMENTOS INDICADOS.

LAJES : COBRIMENTO : 2,5cm

VIGAS E PILARES : COBRIMENTO : 3,0cm

BLOCOS : COBRIMENTO : 4,0cm

4. CONFERIR MEDIDAS NO LOCAL ANTES DE EXECUTAR OS SERVIÇOS.

5. TODAS AS PEÇAS ESTRUTURAIS DEVERÃO TER AS DIMENSÕES MÍNIMAS MENCIONADAS NESTE PROJETO.

6. A EXECUÇÃO DA ESTRUTURA DEVERÁ OBEDECER AS PRESCRIÇÕES DA NBR-6118:2014.

Relação do aço									
VC18	VC19	VC22							
VC23	VC24	VC25							
VC26	VC27	VC28							
VC29	VC30	VC31							
VC32	VC33								
AÇO	N	DIAM (mm)	QUANT (un)	C.UNIT (un)	C.TOTAL				
CA50	1	5,0	128	168	21504				
	2	5,0	140	158	22120				
	3	5,0	10	642	6420				
	4	5,0	85	148	12580				
	5	5,0	10	392	3920				
	6	5,0	72	148	10656				
	7	5,0	44	138	6072				
	8	5,0	10	767	7670				
	9	5,0	99	178	17622				
	10	6,3	28	1200	33600				
CA50	11	6,3	10	104	1040				
	12	6,3	64	1144	73216				
	13	6,3	463	188	87044				
	14	6,3	30	1196	35880				
	15	6,3	8	93	744				
	16	6,3	7	108	756				
	17	6,3	22	245	5390				
	18	6,3	97	168	16296				
	19	6,3	14	285	3990				
	20	6,3	14	163	2282				
	21	6,3	2	117	234				
	22	6,3	4	112	448				
	23	8,0	73	188	13724				
	24	8,0	3	150	450				
	25	8,0	10	178	1780				
	26	10,0	2	679	1358				
	27	10,0	2	384	768				
	28	10,0	6	784	4704				
	29	10,0	1	241	241				
	30	10,0	2	1066	2132				
	31	10,0	2	239	478				
	32	10,0	1	226	226				
	33	10,0	2	759	1518				
	34	10,0	3	125	375				
	35	10,0	2	1179	2358				
	36	12,5	2	895	1790				
	37	12,5	2	750	1500				
	38	12,5	2	779	1558				
	39	12,5	2	731	1462				
	40	12,5	2	746	1492				
	41	12,5	2	428	856				
	42	12,5	2	1178	2356				
	43	12,5	1	619	619				
	44	12,5	2	1075	2150				
	45	12,5	2	779	1558				
	46	16,0	2	779	1558				
	47	16,0	3	727	2181				
	48	16,0	1	732	732				
	49	16,0	2	892	1784				
	50	16,0	2	1177	2354				
	51	16,0	2	802	1604				
	52	16,0	2	628	1256				
	53	16,0	2	1081	2162				
	54	16,0	2	466	932				
	55	20,0	1	337	337				
	56	20,0	5	1200	6000				
	57	20,0	1	253	253				
	58	20,0	1	483	483				
	59	20,0	2	1194	2388				
	60	20,0	2	1194	2388				
	61	20,0	4	810	3240				
	62	20,0	2	1172	2344				
	63	20,0	2	1194	2388				
	64	20,0	2	294	588				
	65	20,0	2	1101	2202				
	66	20,0	2	183	366				
	67	20,0	2	352	704				
	68	25,0	4	752	3008				
	69	25,0	2	592	1184				
	70	25,0	10	1071	10710				
	71	25,0	2	366	732				
	72	25,0	4	740	2960				
	73	25,0	4	1169	4676				
	74	25,0	3	657	1971				
	75	25,0	2	347	694				
	76	25,0	1	717	717				
	77	25,0	1	727	727				
	78	25,0	5	1194	5970				
	79	25,0	2	457	914				
	80	25,0	3	667	2001				
	81	25,0	2	359	718				
	82	25,0	2	644	1288				
	83	25,0	2	1061	2122				
	84	25,0	2	334	668				
	85	25,0	1	652	652				
	86	25,0	1	702	702				
	87	25,0	1	338	338				
	88	25,0	2	456	912				
	89	25,0	4	357	1428				

Resumo do aço			
AÇO	DIAM (mm)	C.TOTAL (m)	PESO (kg)
CA50	5,0	2000,2	638,5
	6,3	230,8	91
	8,0	141,6	87,9
	10,0	142,6	137,3
	12,5	145,7	229,9
	16,0	244,1	602
	20,0	445,5	1716,6
	25,0	1085,7	167,3
	5,0		
	5,0		
PESO TOTAL (kg)			
CA50		3502,6	
CA50		167,3	